

THE GAZETTE

The official newsletter of ADDMORE Services LLC



CHRISTMAS *Special*

IN THIS ISSUE

NEW YEAR, BETTER ADDMORE

REINTRODUCING
THE FOUR PILLARS

ANNOUNCEMENT: CLOSING
2022 AND WELCOMING THE
NEW YEAR

DECEMBER STAFF HIGHLIGHT:
BIJAE

New Year, Better ADDMORE

ADDMORE Services has come a long way since it started in 2020. From establishing the company, making a name for itself, acquiring clients, and growing its team, it has definitely been a very eventful and exciting journey. Of course, we never stop growing as we continue our pursuit in always improving and becoming a better professional technical services company.

ADDMORE has started by thinking outside the box. Now, we put emphasis on how we focus on our client's business and help them when they outsource to us by prioritizing what they need the most. While our services remain the same, we did a few adjustments to make it easier for our potential clients to determine the right fit for their projects.



ADDMORE SERVICES

Focus on your Core Business and Outsource

AUTOCAD • BIM • COST ESTIMATION & TAKEOFFS • ARCHITECTURAL DRAWINGS

This is ADDMORE Services, a professional technical services company for the architectural, engineering, and construction industry, offering its primary services—AutoCAD 2D & 3D, BIM (LOD100 to 450), Cost Estimation & Takeoffs, and Architectural Drawings.

Headquartered in Las Vegas, Nevada, with a team of licensed architects, civil engineers and quantity surveyors in Manila and Cebu, Philippines, the company's key markets include the USA, Australia, UK, Dubai, and Ireland.

Visit our website at www.addmoreservices.com for more details.

REINTRODUCING THE FOUR PILLARS



In total, ADDMORE Services lists 9 professional and technical services under its roster, using state-of-the-art tools to give us the leading edge. While all our services remain, we have decided to shift the focus to our four main pillars: AutoCAD 2D & 3D, BIM (LOD100 to 450), Cost Estimation & Takeoffs, and Architectural Drawings.

REINTRODUCING THE FOUR PILLARS

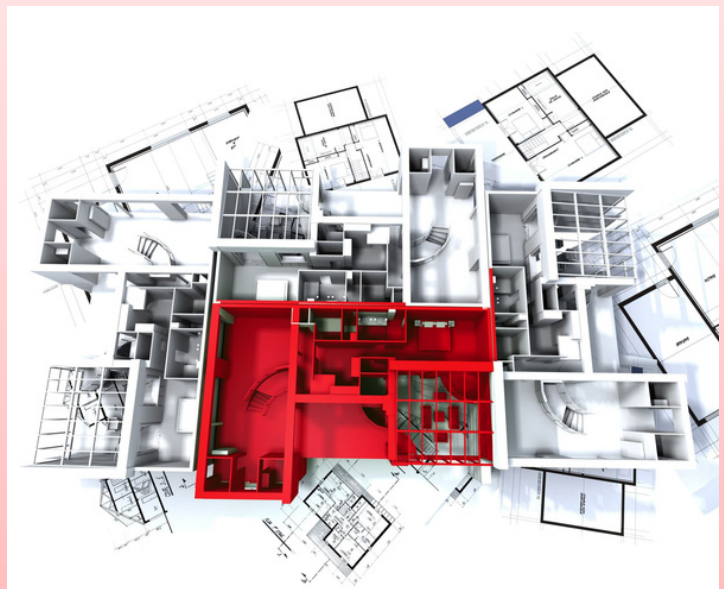
AUTOCAD 2D & 3D

ADDMORE offers premium-quality AutoCAD 2D & 3D services while ensuring affordable rates and quick turnaround time. Our team has extensive experience working on several design and architectural projects. Our team's expertise has developed over time, enabling them to provide accurate and precise modeling images and drawings.



BIM (LOD100 to 450)

BIM is an intelligent virtual model-based process that provides insight to help you plan and design for construction and manage buildings and infrastructure. We offer 360° AEC Services for the entire lifecycle of the building: from 2D to 7D, Co-ordination & Clash Detection, Laser Scan to BIM, Family Creation, and Consulting.



REINTRODUCING THE FOUR PILLARS

COST ESTIMATION & TAKEOFFS

ADDMORE provides accurate cost estimates and takeoffs, with quick turnaround, scalability and clear communication for architectural and interior fit-out construction projects. We are committed to delivering premium services on pre-contract, contract and post-contract works.

Our team leaders of highly qualified quantity surveyors and contract specialists with a global experience in the construction industry will ensure that in-house quality control and accuracy is always a priority.



ARCHITECTURAL DRAWINGS

ADDMORE develops construction documentation & drawings, for architects, engineers, fabricators, and contractors.

ADDMORE's team of CAD drafters, BIM specialists, architects, and civil engineers collaborate to develop detailed construction documentation for effective scheduling, RFIs, material takeoffs, fabrication & coordination between MEP engineers.



SUPPLEMENTARY SERVICES

In addition to our four pillars, we offer the following supplementary services:



PROJECT MANAGEMENT



QUALITY CONTROL &
QUALITY ASSURANCE



FF&E AND OS&E
PROCUREMENT SOLUTIONS



E-DESIGN



MARINE CONSULTANCY

ANNOUNCEMENT: CLOSING 2022 AND WELCOMING THE NEW YEAR

December 23, 2022, EOB - Office closed for the holidays
January 3, 2023 - Office reopens



This year, our offices will be closed on the 23rd of December, EOB and will reopen on the 3rd of January, 2023. Enjoy the holidays!

DECEMBER STAFF HIGHLIGHT: BIJAE



BIJAE ABEJUELA Digital Marketing Manager

Ma. Bernadine Abejuela also called “Bijae” has been a vital member of the ADDMORE Services team for almost two years, and has been instrumental in helping to grow the company's digital marketing presence. Bijae understands that our digital marketing efforts are critical to our success, and works tirelessly to make sure our social media accounts are always updated and engaging.

She is a team player who works well with others, but she also has a strong sense of self-motivation and can get things done on her own when necessary.

Her responsibilities include creating digital marketing strategies, managing social media accounts, and producing content. She is also responsible for paid advertisement and creating analytics reports to track progress.



**Happy Holidays
from ADDMORE!**

Get more ADDMORE updates on the daily through
our social media channels and website

